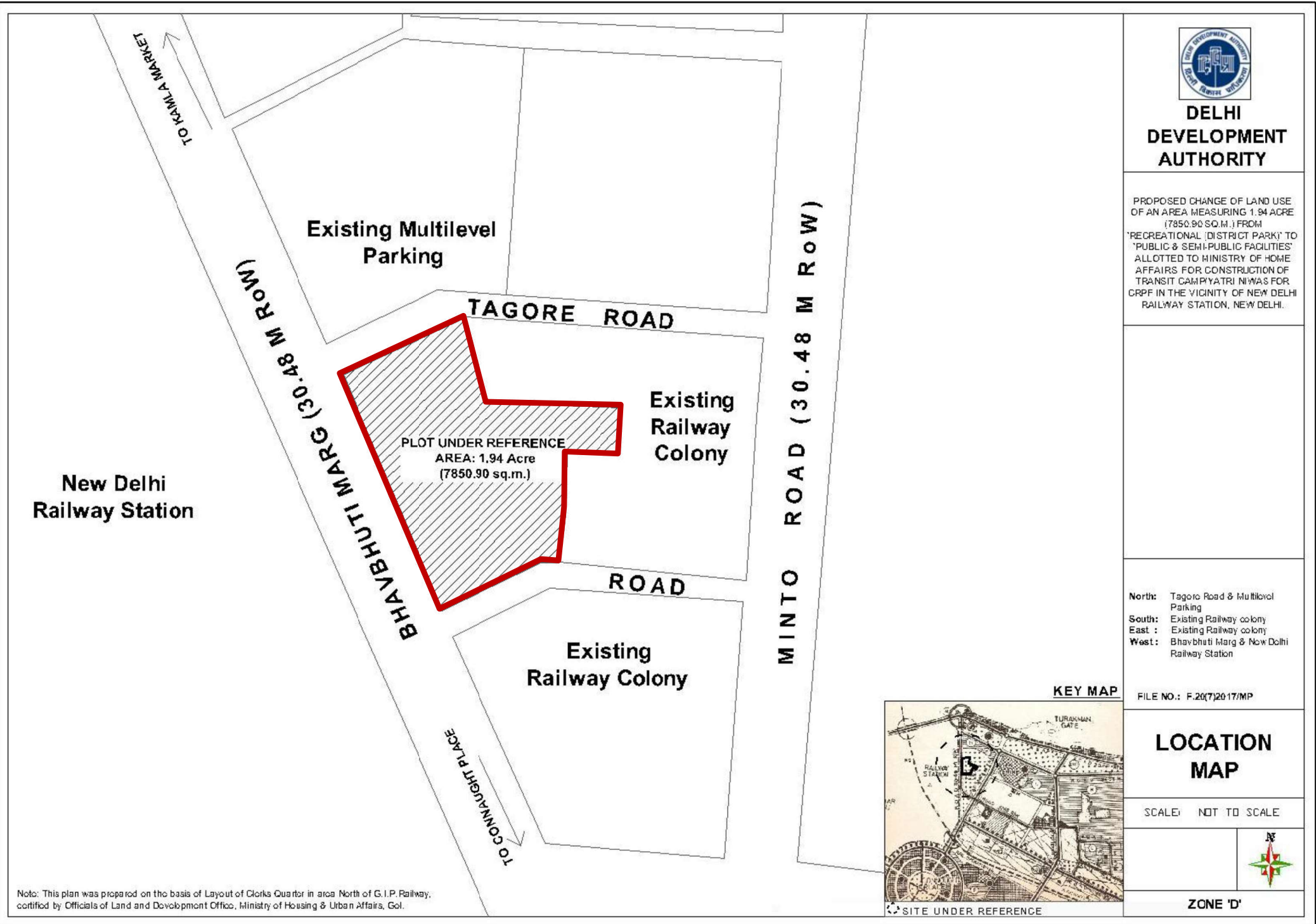


# LOCATON PLAN



**DELHI  
DEVELOPMENT  
AUTHORITY**

PROPOSED CHANGE OF LAND USE OF AN AREA MEASURING 1.94 ACRE (7850.90 SQ.M.) FROM 'RECREATIONAL (DISTRICT PARK)' TO 'PUBLIC & SEMI-PUBLIC FACILITIES' ALLOTTED TO MINISTRY OF HOME AFFAIRS FOR CONSTRUCTION OF TRANSIT CAMPYATRI NIWAS FOR CRPF IN THE VICINITY OF NEW DELHI RAILWAY STATION, NEW DELHI.

North: Tagore Road & Multilevel Parking  
 South: Existing Railway colony  
 East : Existing Railway colony  
 West: Bhavbhuti Marg & New Delhi Railway Station

FILE NO.: F.20(7)2017/MP

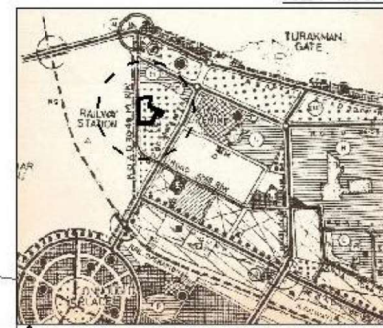
**LOCATION  
MAP**

SCALE: NOT TO SCALE



**ZONE 'D'**

**KEY MAP**



Note: This plan was prepared on the basis of Layout of Clerks Quarter in area North of G.I.P. Railway, certified by Officials of Land and Development Office, Ministry of Housing & Urban Affairs, Govt.